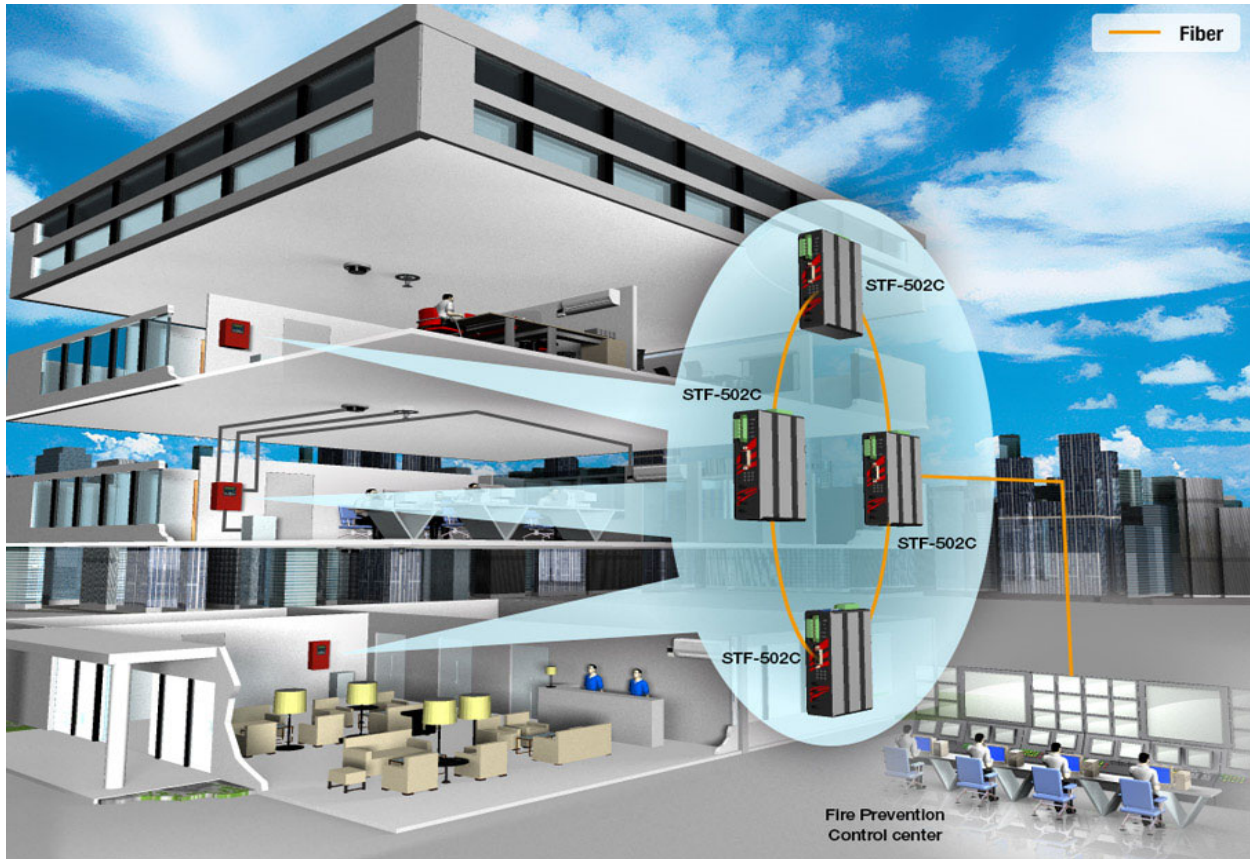


## Fire Alarm Panel Monitoring



### Application

A serial to fiber network is used to transmit a fire alarm code to a remote fire prevention control center.

### Application Requirements

1. Extended fire alarm code (serial) data transmission in distance from the facility to a remote fire prevention center
2. Redundant serial fiber network within the facility to prevent "0" data loss
3. Reliable industrial serial to fiber media converter to ensure a long lasting 24/7 operation

### Solution

1. **STE-502C Series:** Industrial RS232/422/485 serial-to-fiber media converter
  1. Supports serial baud rate up to 1024Kbps
  2. Secure serial data protection with built-in RS485 auto detection feature, 15KV ESD protection, and 2.5KV isolation protection
  3. Supports a dual fiber connection with model options in multi-mode (2KM) or single-mode (30KM) solutions